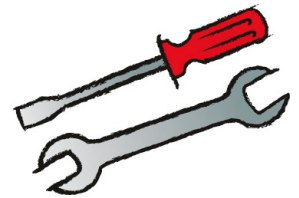




Das Original

TSI 12/10



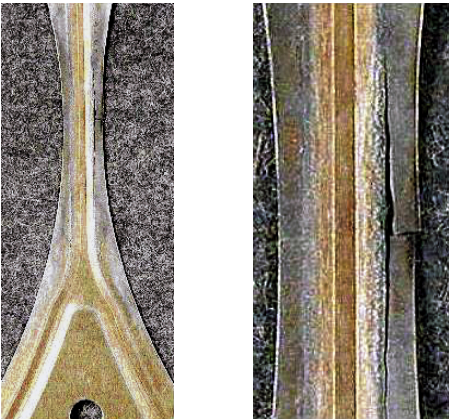
# Tips from the gasket expert

## Engine failure – is the cylinder head gasket to blame?

# Uncontrolled combustion process on multi-layer metal gaskets

### ***Damage symptoms:***

Initial black discoloration in the sealing web area of the functional layer indicates the start of destruction, which is complete in the second picture (right).



### ***Cause:***

An uncontrolled combustion process generated high-frequency vibrations. The resulting shock waves destroyed the sealing web.

### ***Other possible causes:***

- Poor fuel quality (insufficient octane rating).
- Excessive compression ratio.
- Sparkplugs with incorrect heat rating.

### ***Measures:***

Follow the specified installation instructions closely.  
Be certain to use the engine parts (sparkplugs) specified by the manufacturer.